

#### Introduction:

The **MC-1500** media converter is specifically designed to offer fiber advantages for mission-critical networks like Telco/ISP backbones, cable operators, banking and enterprise networks. The **MC-1500** can reduce network downtime and increase Quality of Service levels. The converters are completely transparent when installed, so the network performs exactly the way it would do normally – only now, it can incorporate both copper and fiber mediums.

This flexibility in cabling allows network managers to put fiber cables anywhere within a network without changing the arrangement of the copper-based Gigabit segments. Their compact size allows the converters to be wall-mounted to save space. Several converters can be simultaneously installed by using the MC-1600-4 4-slot and MC-1600-12, 19" rack-mountable chassis.

The **MC-1500** takes advantage of intelligent connection technology to support Auto-negotiation, thereby eliminating the hassle of manually configuring or monitoring settings. This ensures plug-n-play operability.



#### Main Features:

##### Standards:

- ◆ Complies with IEEE 10/100Base-TX, IEEE 802.3ab 1000Base-T and IEEE 802.3z 1000Base-LX standards

##### Interface:

- ◆ One 10/100/1000 Mbps Ethernet port
- ◆ Auto MDI/MDI-X support on RJ-45 port
- ◆ One SFP slot for Gigabit links
- ◆ Extends distances up to 110Km (Single Mode)

##### Management:

- ◆ Alarm LED illuminates to indicate link failure
- ◆ Status LEDs for easy monitoring of device's status

##### Mechanical & Environmental:

- ◆ External power supply
- ◆ Chassis-compliant (internal power supply)
- ◆ FCC Class A & CE approved
- ◆ RoHS compliant



**Specifications:**

Standards Conformity:	IEEE 10/100Base-TX & IEEE 802.3ab 1000Base-T & IEEE 802.3z 1000Base-SX/LX
Connector:	1 x RJ-45 or 1 x Fiber
Max. Distance:	UTP: 100 meters (Cat. 5/5e/6) <b>Fiber: SFP; up to 2km (multi-mode)</b> <b>Fiber: SFP up to 110Km (single-mode)</b>
Unit LEDs: PWR:	Illuminates for normal operation
ALM:	Illuminated when failure occurs on fiber or copper link
LNK/ACT:	Fiber link – Illuminated when receiving link pulses from compliant devices – Flashing when data packets are being transmitted / received
MDI/MDI-X:	Auto Selection
Power:	Power Input: 12V DC @ 0.8A, external power supply adapter Frequency: 47Hz to 63Hz
Temperature: Operating:	0c to 50c
Storage:	-20°C to 70°C
Humidity: Operating:	10% to 90%RH
Storage:	5% to 90%RH
Emission Compliance:	FCC Part 15 of Class A & CE approved
Dimensions:	109.2 x 73.8 x 23.4mm (D x W x H)
Weigh:	158g
Dip Switches:	DIP 1 LFS: Enable/disable Link-Fault Signaling (LFS)

**Applications:**

The diagram on the left illustrates a typical application for the MC-1500LC converter. The actual distances will depend on several factors, including the quality of cables used and the terminal equipment employed.

**Ordering Information:**

**MC-1500LC-MM**

**MC-1500LC-MM-550M**

**MC-1500LC-MM-2Km**

Mini GBIC, 1.25G SFP-type Multi-mode, 3.3V –

**MC-1500LC-SM-10kM**

**MC-1500LC-SM-30Km**

**MC-1500LC-SM-50Km**

**MC-1500LC-SM-70Km**

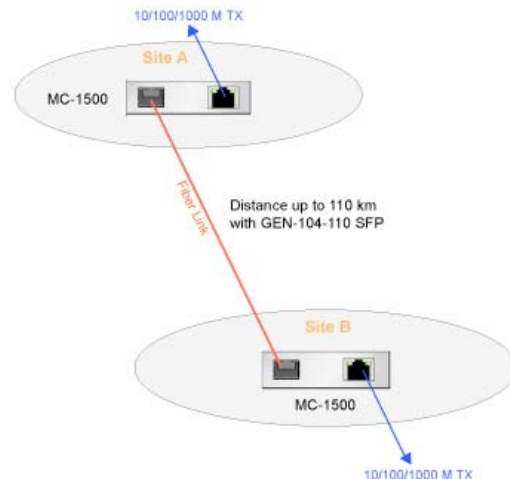
**MC-1500LC-SM-110Km**

Mini GBIC, 1.25G SFP-type Multi-mode, 3.3V

**Rack mount chassis available**

**MC-1600C-4** 4 Bay

**MC-1600C-12** 12 Bay



**TEC Optix Solutions**

Division of Lynn Electronics Corp.

154 Railroad Drive • Ivyland, PA. 18974

800-523-6075 • fax 215-364-2944 • email: sales@lynnelec.com